



Showcase

# POSTEN 2020

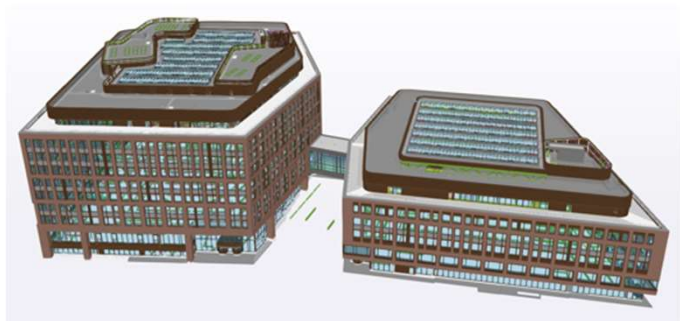
Copenhagen Central



## Vores partnere

**Entreprenør:** Per Aarsleff A/S

**Ingeniør:** COWI A/S



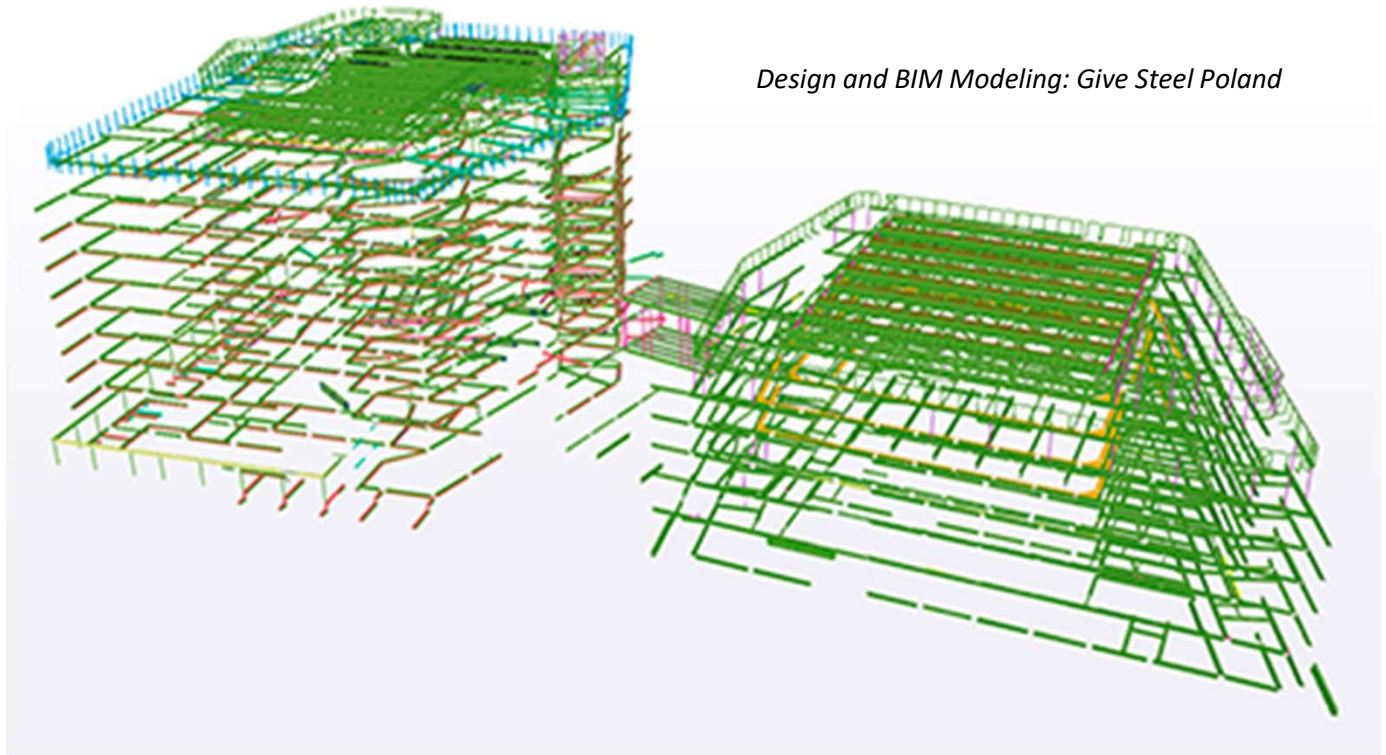
## Internt ved Give Steel

**Projektering:** 2 Projektledere  
2 Statikere  
4 Designere

**Leverance og montage:** 2 Byggeledere  
Bemanding på pladsen: 4 – 25 montører

**BIM og design:** Give Steel Poland

## Overblik over Give Steels leverancer



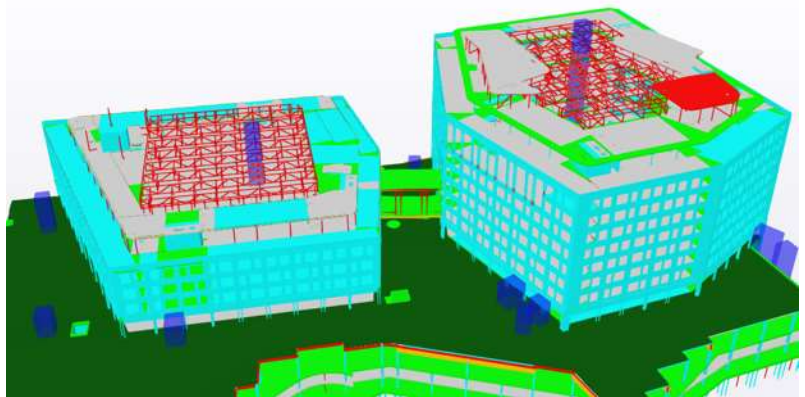
GSY BEAMs™: 1500 ton

Dækbjælker: 540 ton

Gangbro: 60 ton

Tagstål: 950 ton

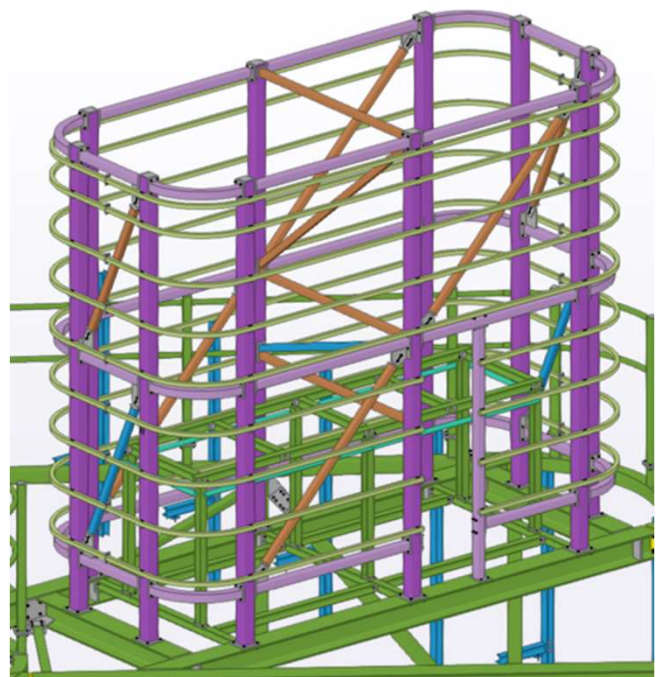
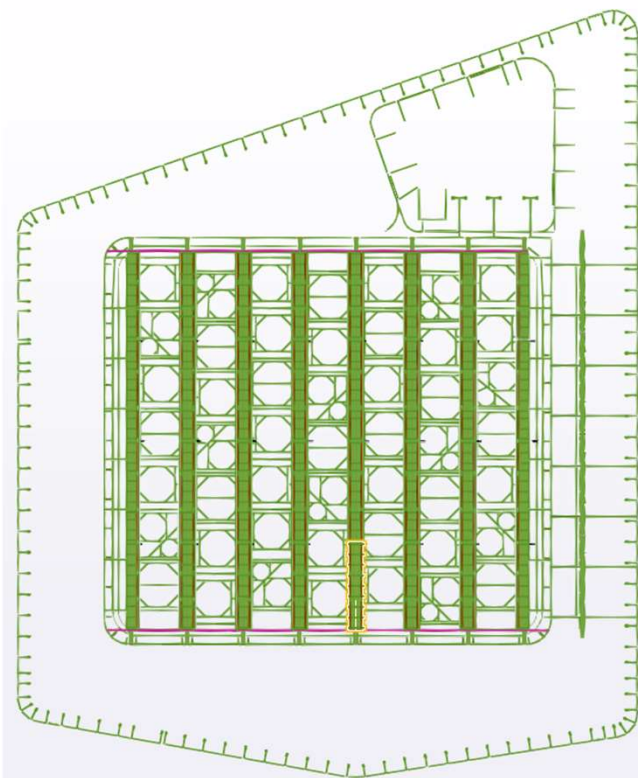
Sekundært stål: 45 ton



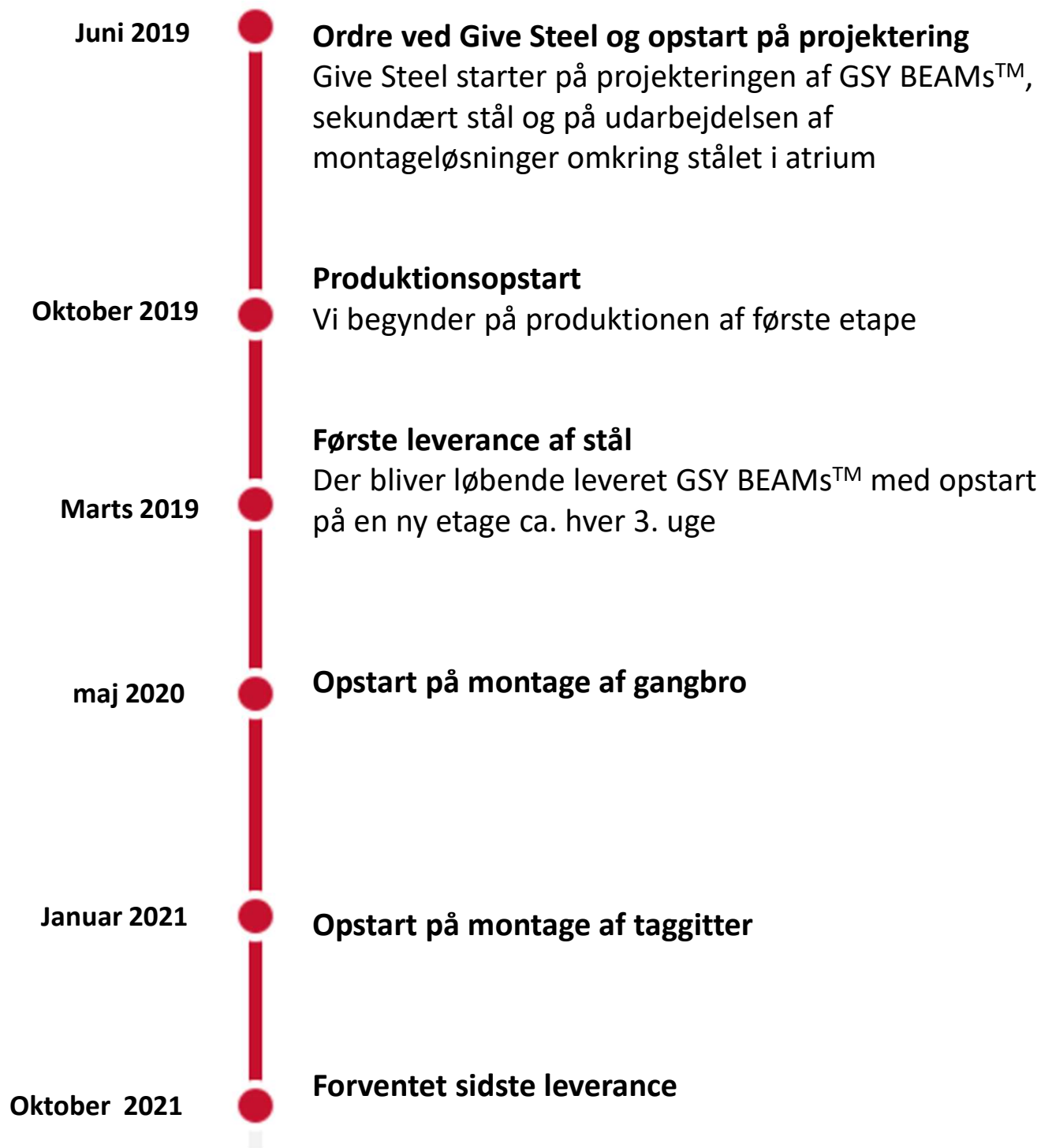
Samlet antal bolte: 25.000 – 30.000 stk.

Overfladebehandling: 20 Håndboldbaner

## Overblik over Give Steels leverancer



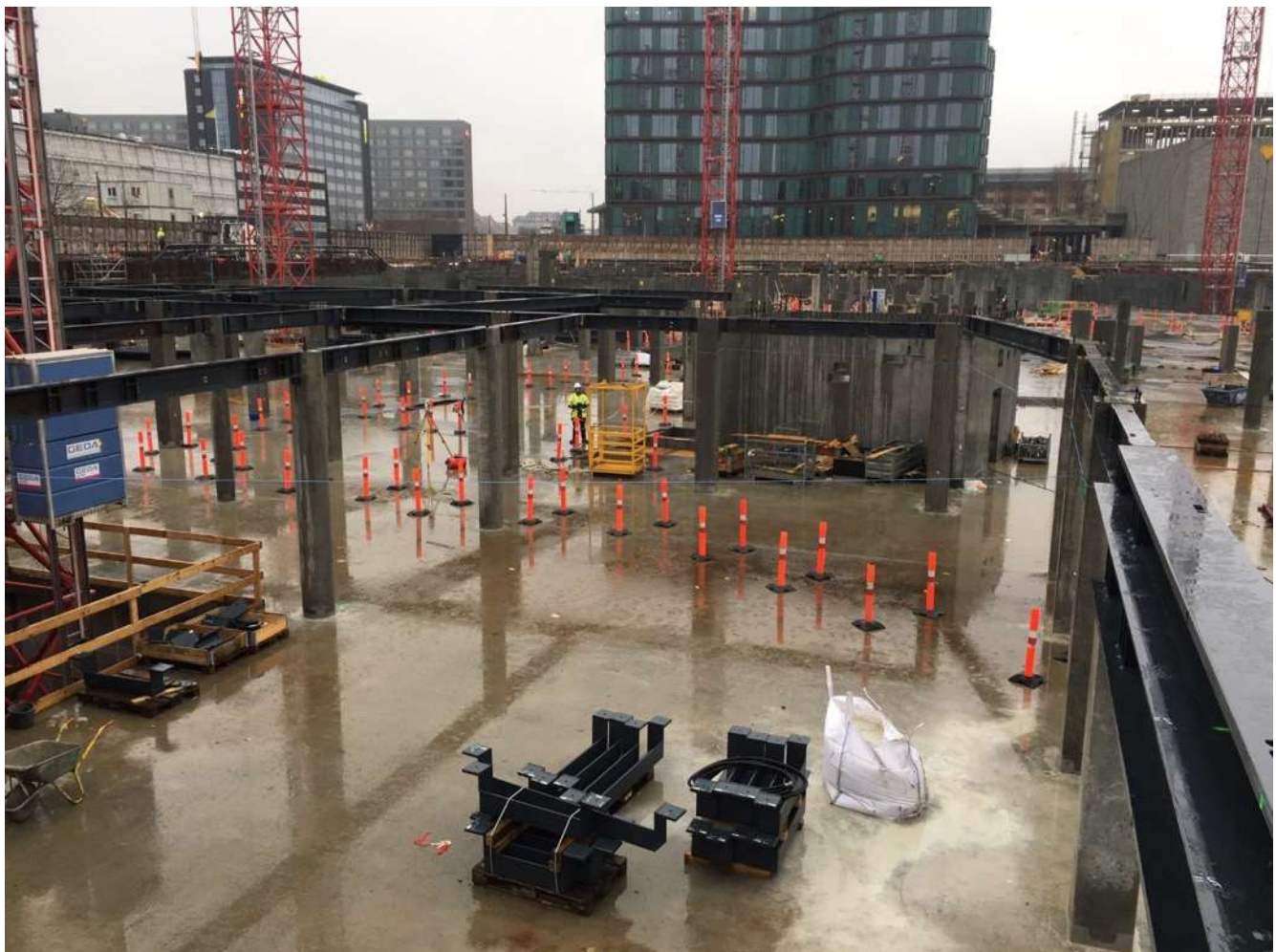
## Hovedtidslinje for projektet



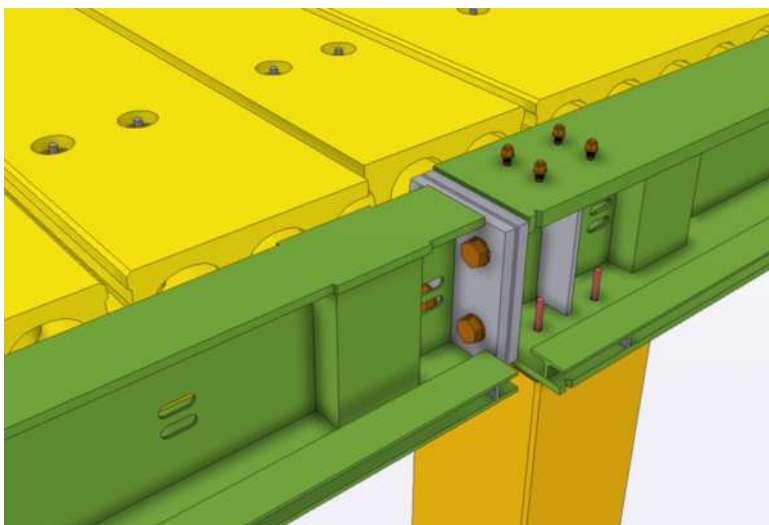
## GSY BEAMS™

**Projektering:** Give Steel A/S

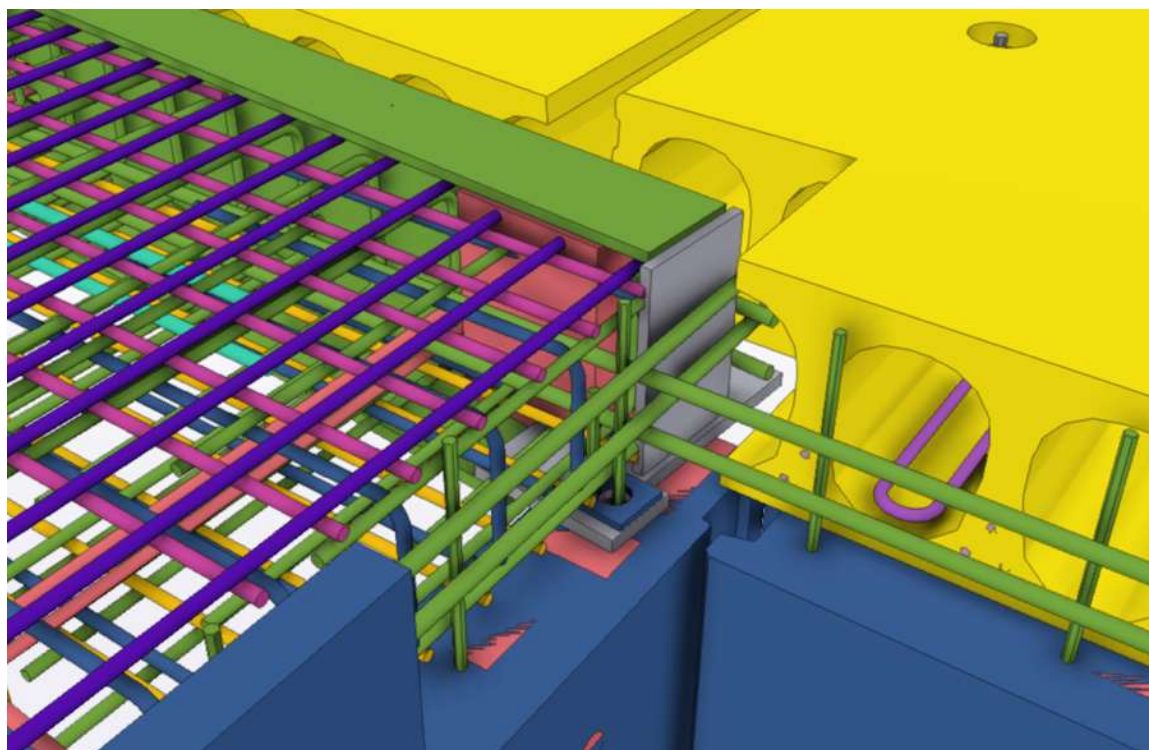
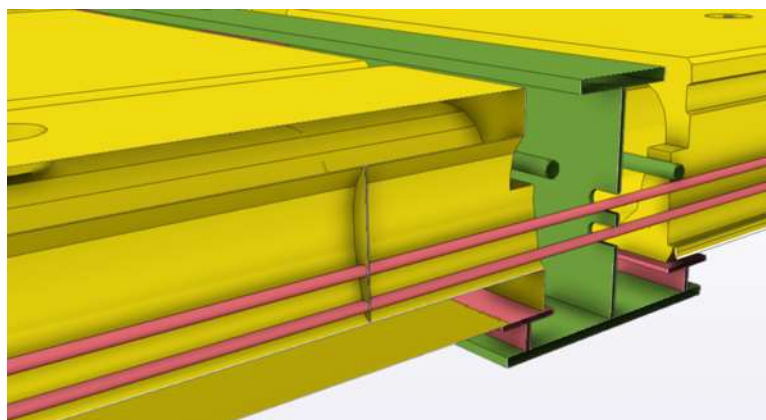
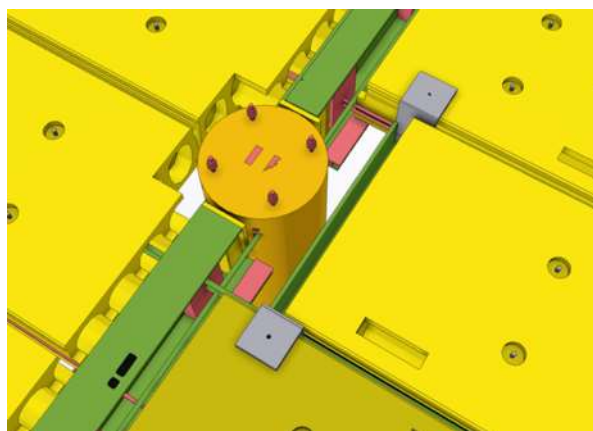
**Montage:** Give Steel A/S  
Gennemsnit 3 uger pr. etage



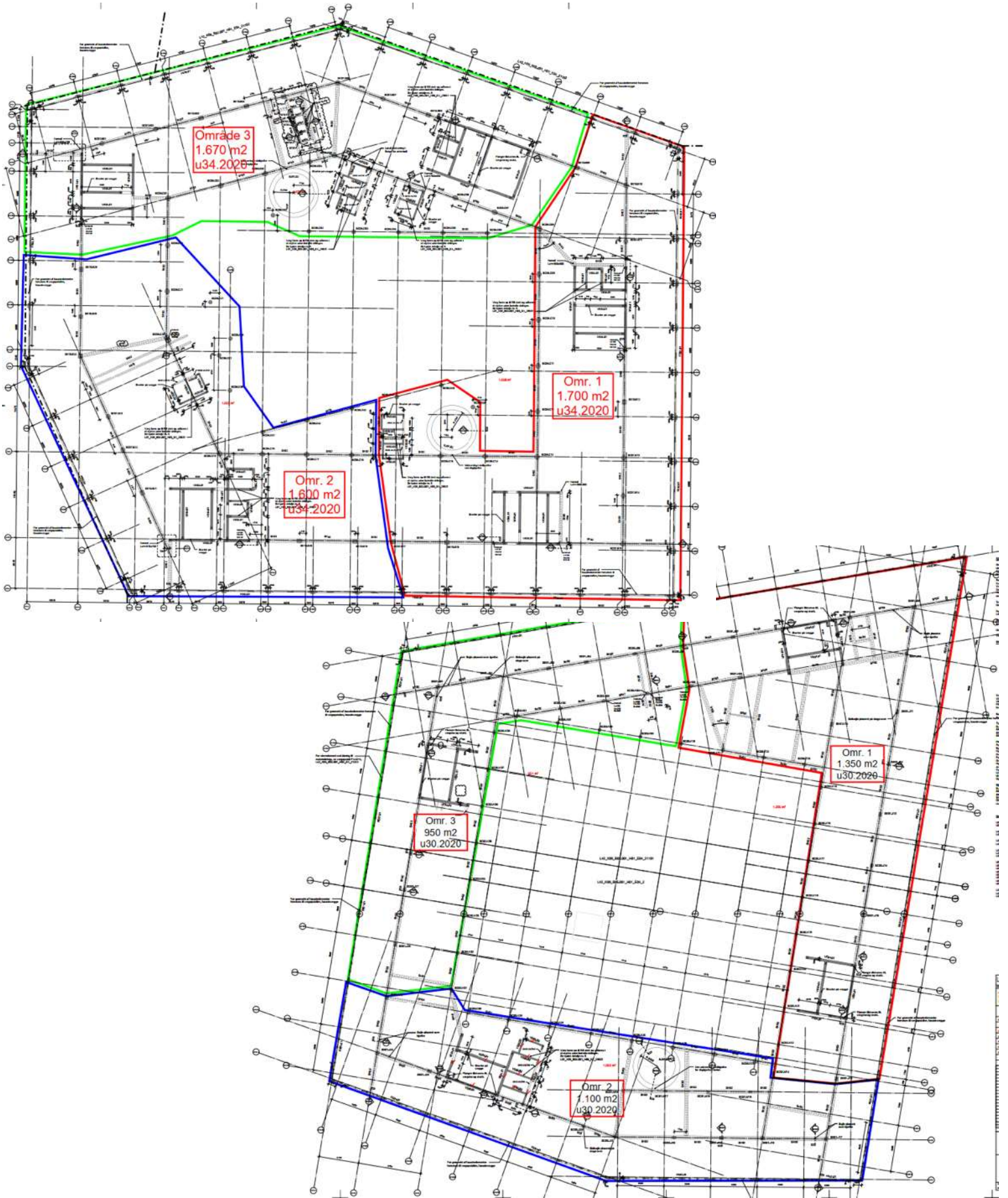
## Koordinering af grænseflader mellem Give Steel, Spæncom og PAA



**Detaljering:** Alle søjler, bjælker, dæk og vægge samt armering i in-situ felter og i fuger er optegnet i Tekla for at sikre koordineringen af grænsefladerne.



# Opdeling af etager i montage etaper





## On Site Photos

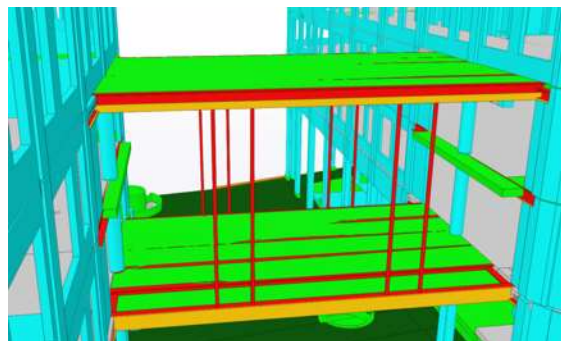


# GIVE STEEL A/S

Show case – Posten, Copenhagen Central



## Gangbro



**Projektering:** COWI A/S

**Montage:** Give Steel A/S

**Opbygning:**

HEM Bjælker mellem de to bygninger  
og kompositdæk mellem bjælkerne

## Tagstål – Gitterspær over atrium

**Projektering:** COWI A/S

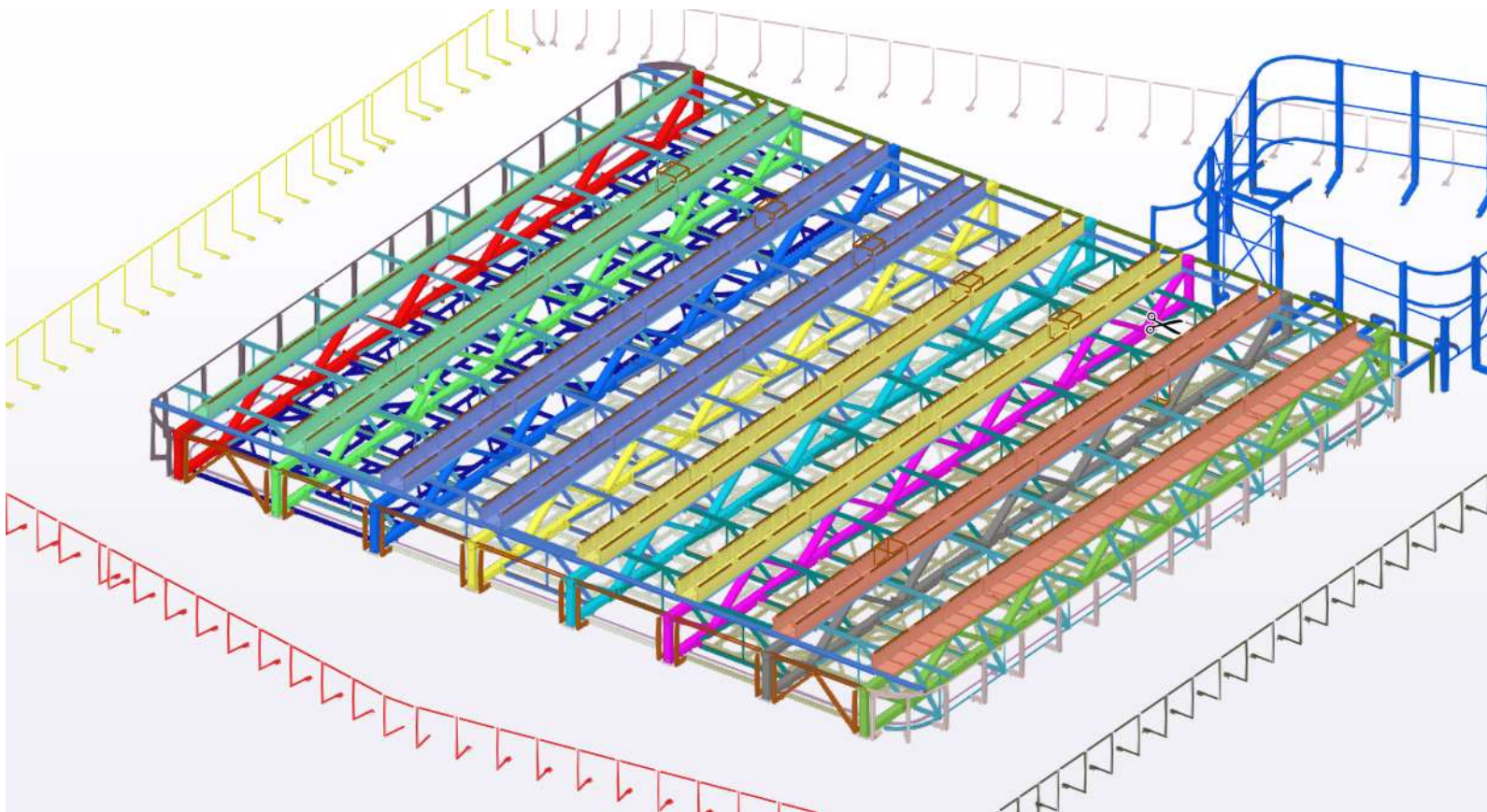
**Montage:** Give Steel A/S

### **Optegning og koordinering:**

Gennem projekteringsforløbet har vi brugt Trimble Connects online opgavemodul, der tillader kommentering på forskellige views direkte i IFC filer.

Det har været en fordel, når både montage, statik og grænseflader skal koordineres, gennearbejdes og kvalitetssikres.

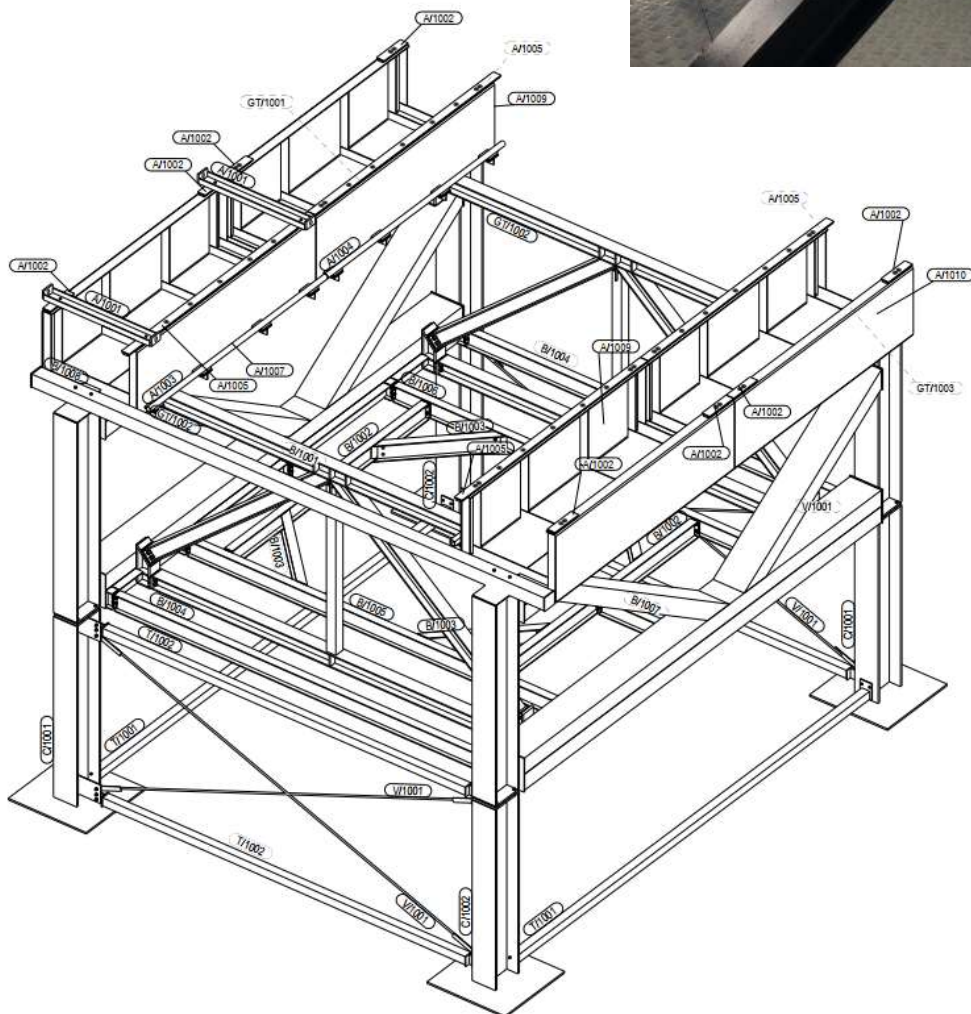
Der er under montagen helt op til 25 montører på tag.



## Tagstål – Gitterspær over atrium

Mock up for de forskellige detaljer i tagkonstruktionen er udarbejdet.

Dette blev udført for at afklare de sidste detaljer og for at optimerer tidsplanen



# Byggepladsplan

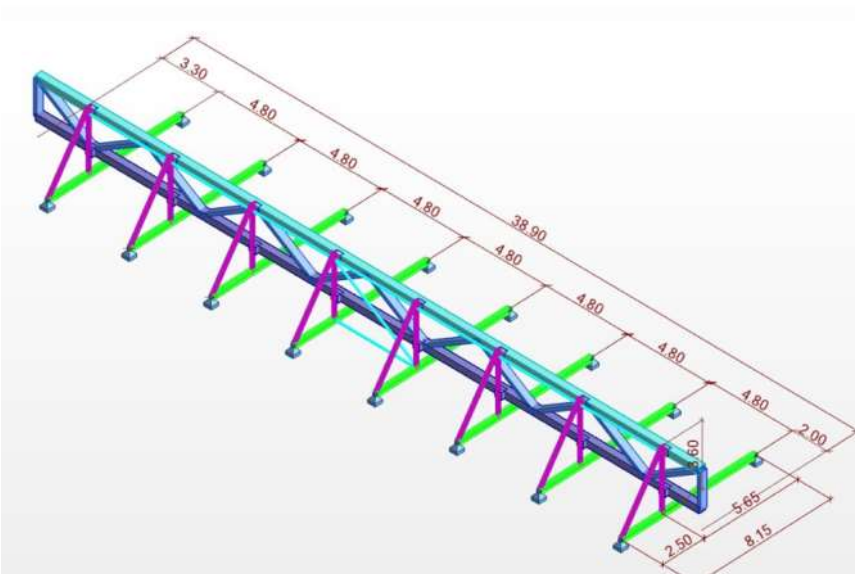
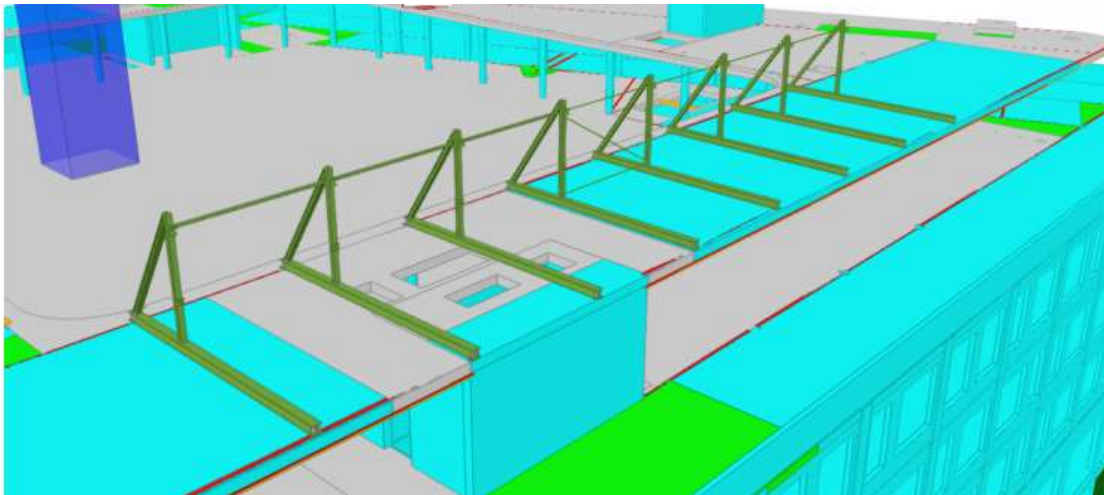
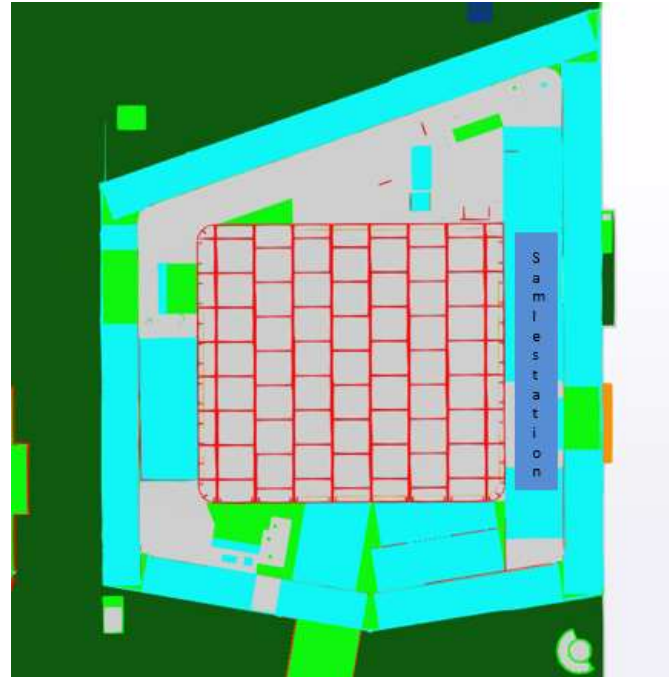


## Tagstål – Montage af gitterspær over atrium

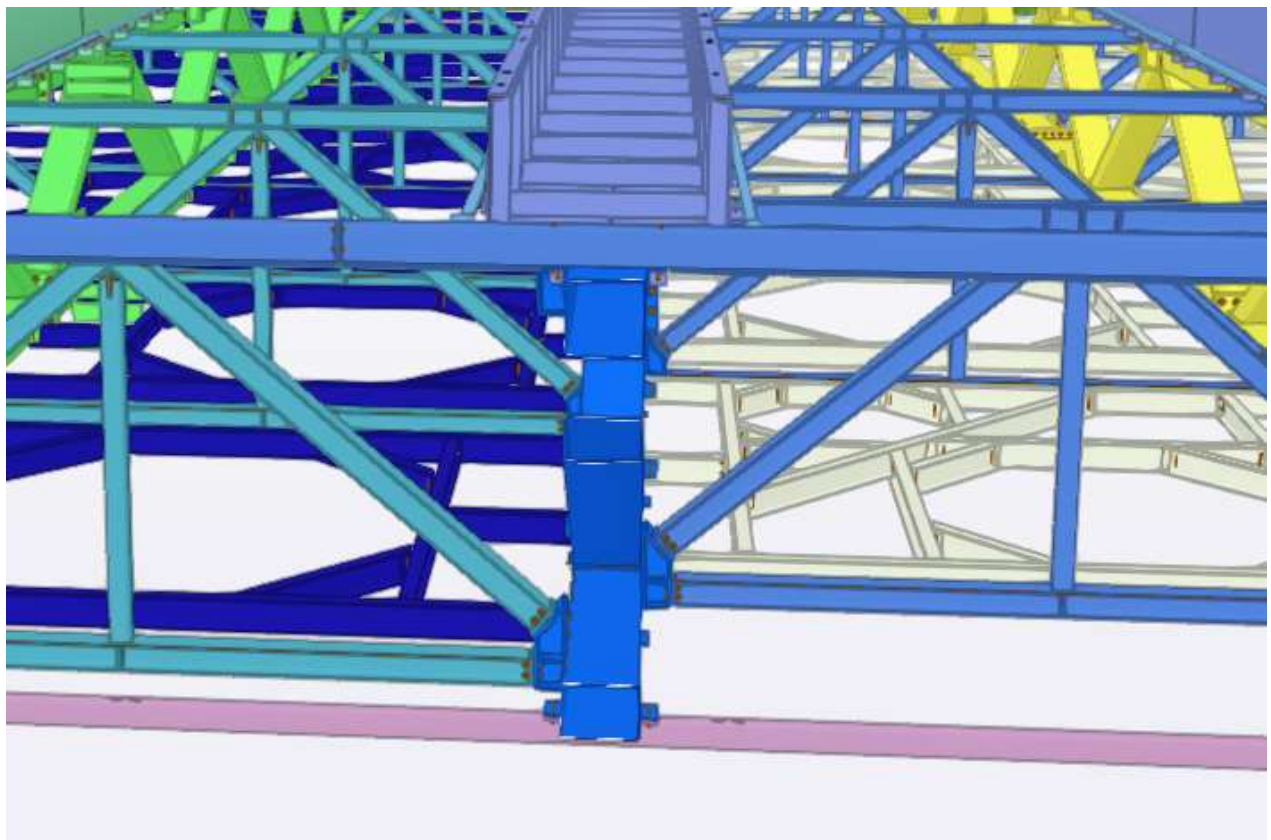
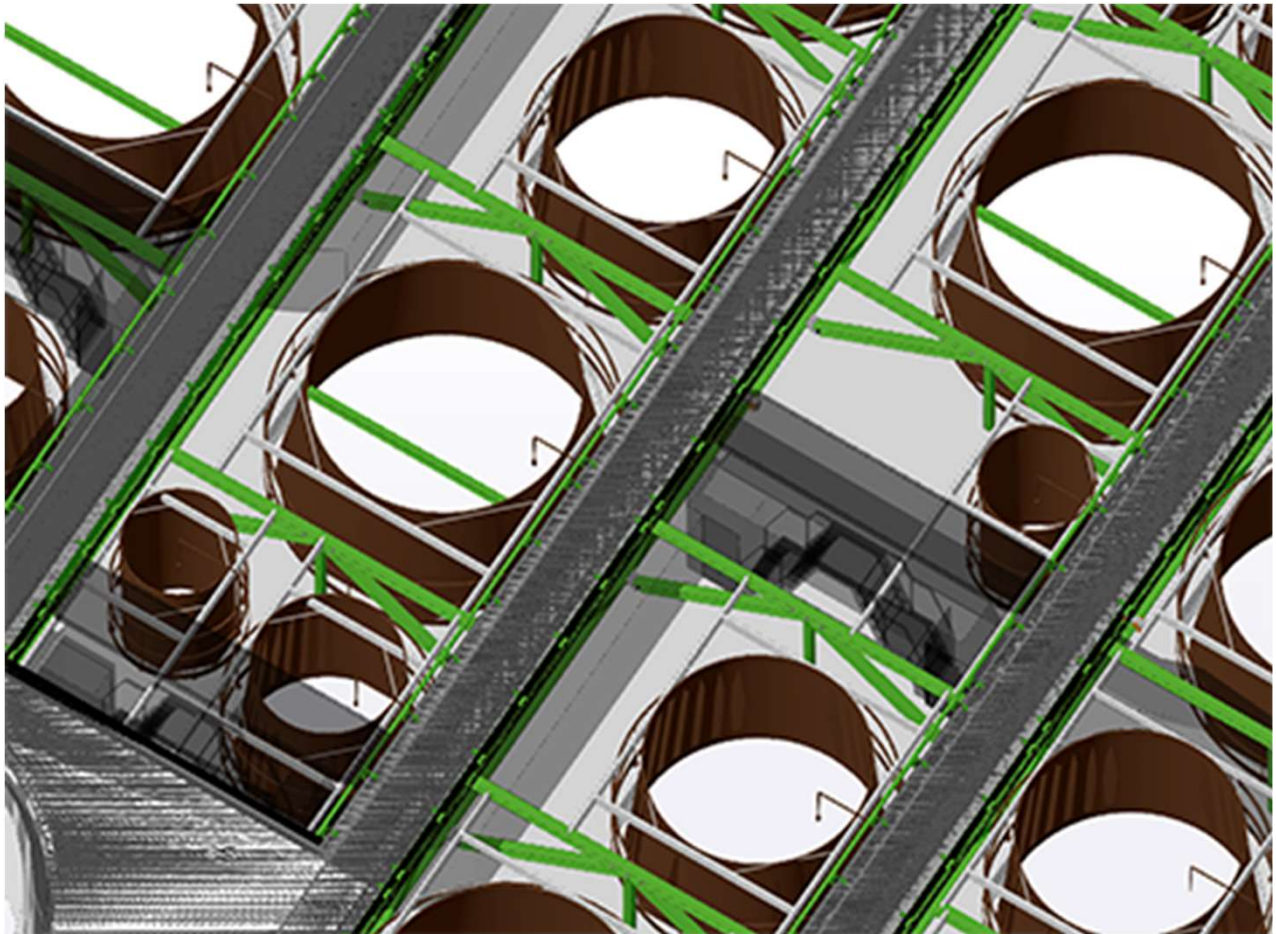
### Samlestation:

Gitterspær over atriummet samles i midlertidig samlestation på taget for at mindske løftearmen på det endelige løft.

De samlede gitterspær vejer 20 ton pr. stk.

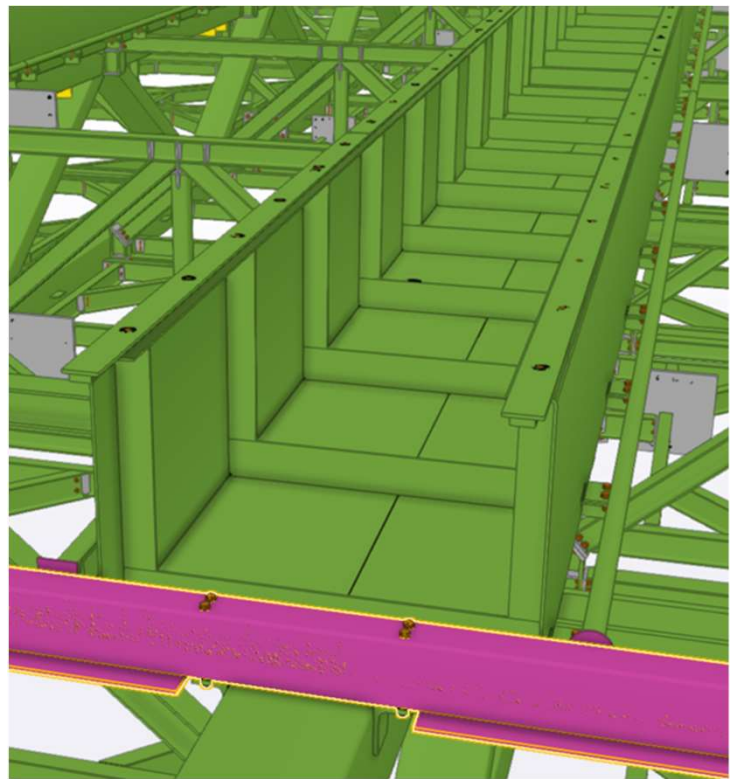
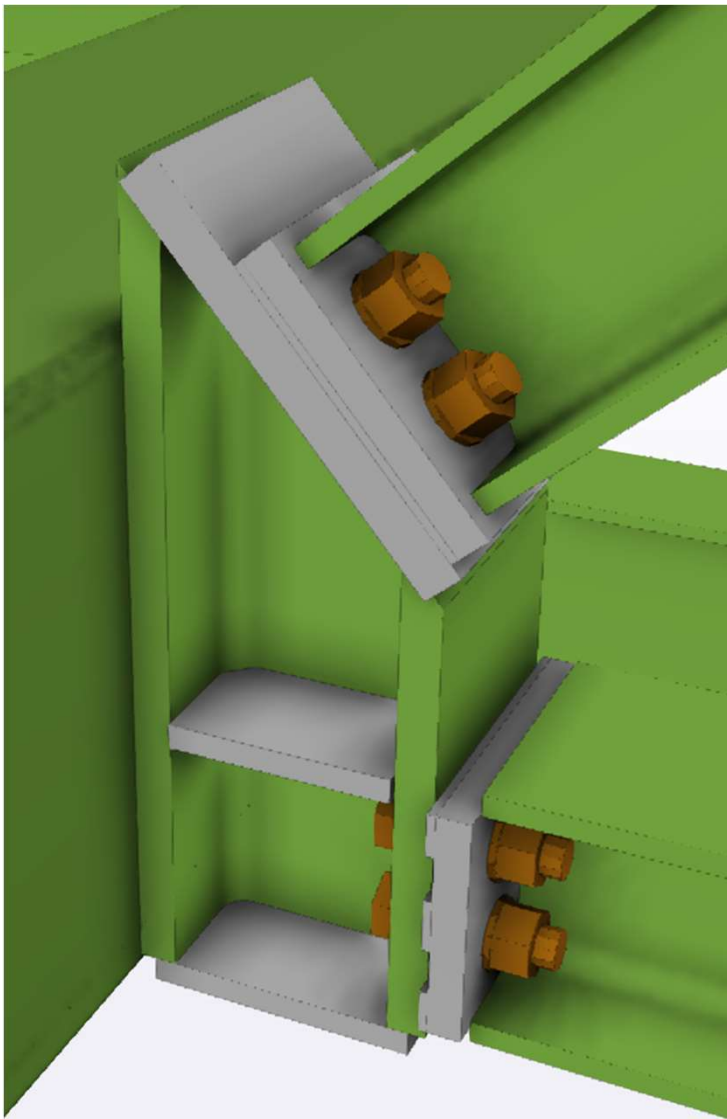
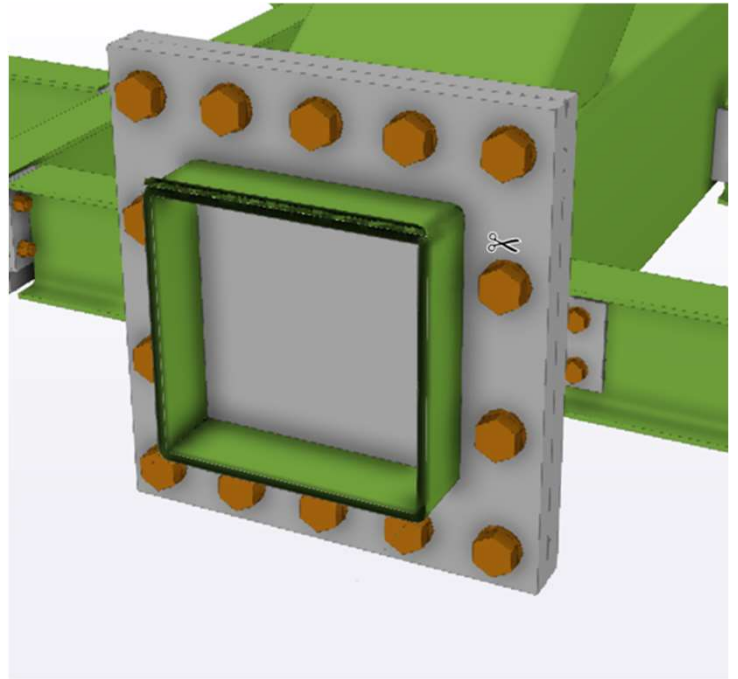
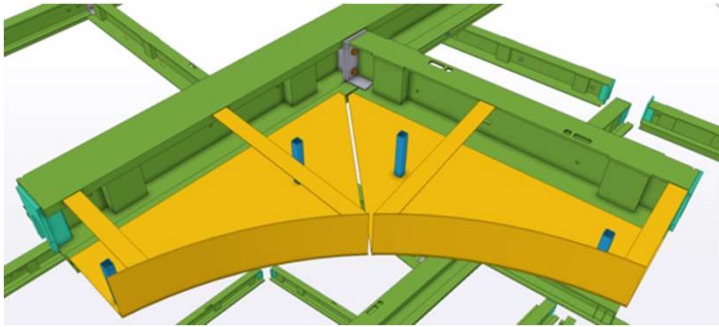


## Ovenlys i tagkonstruktionen

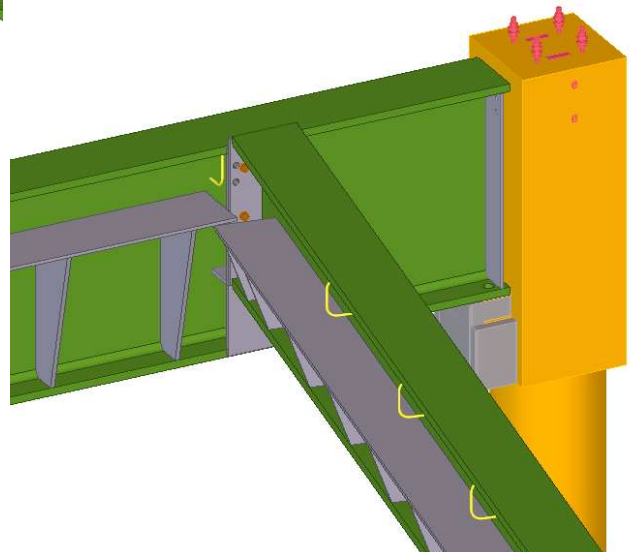
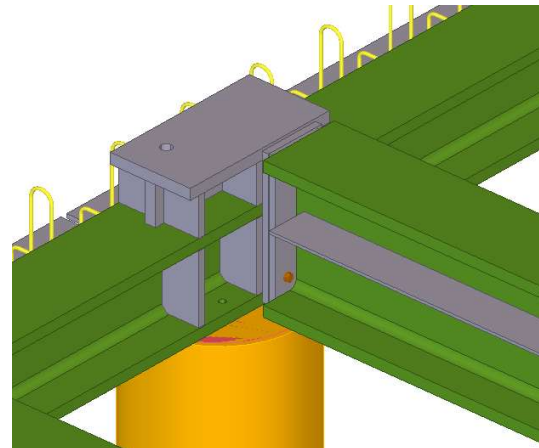
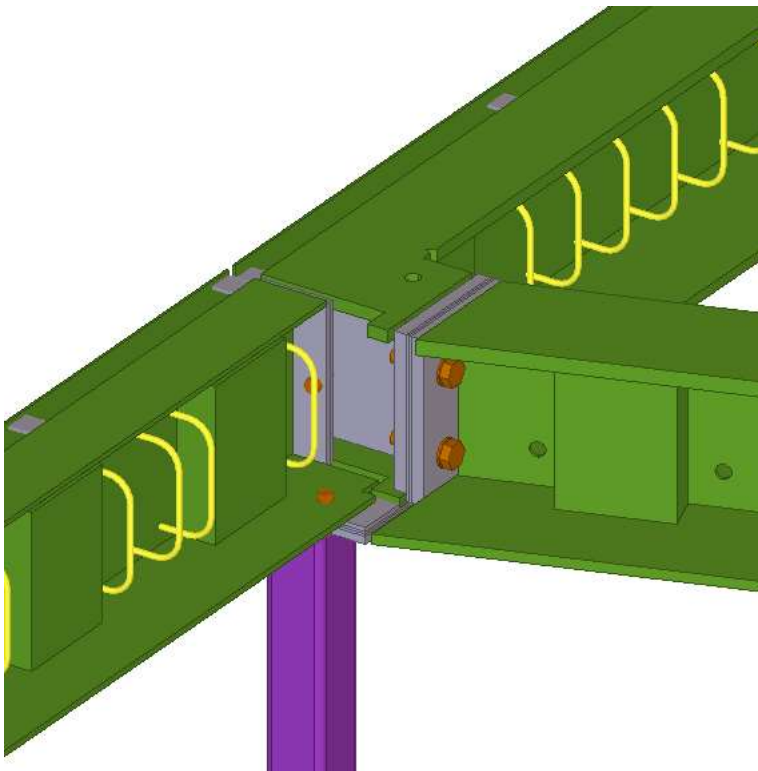
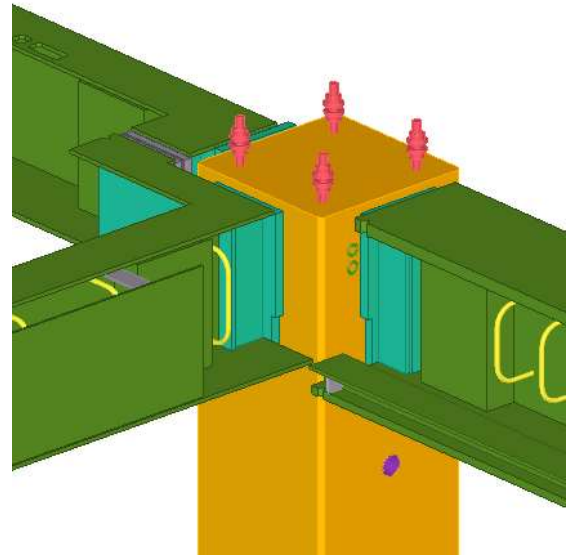
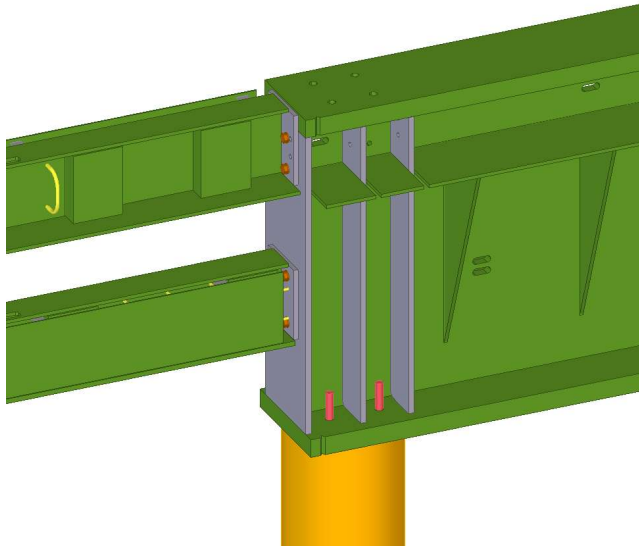




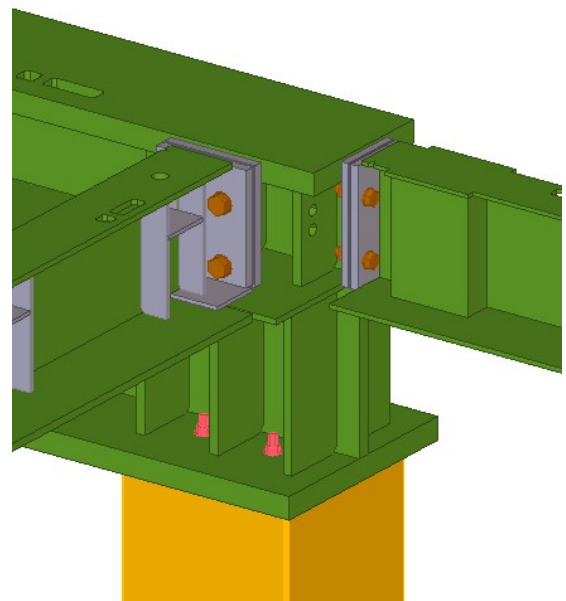
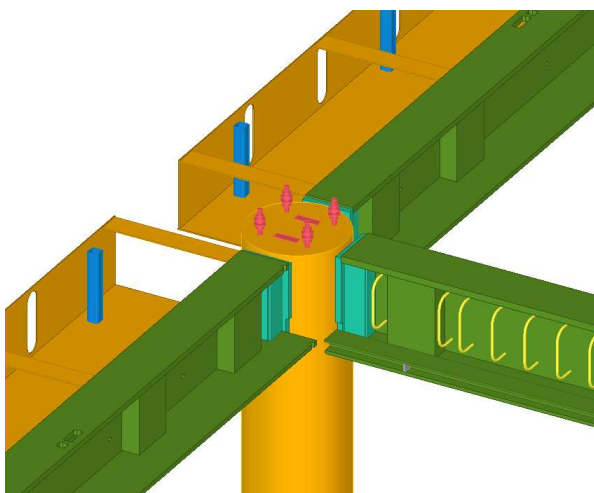
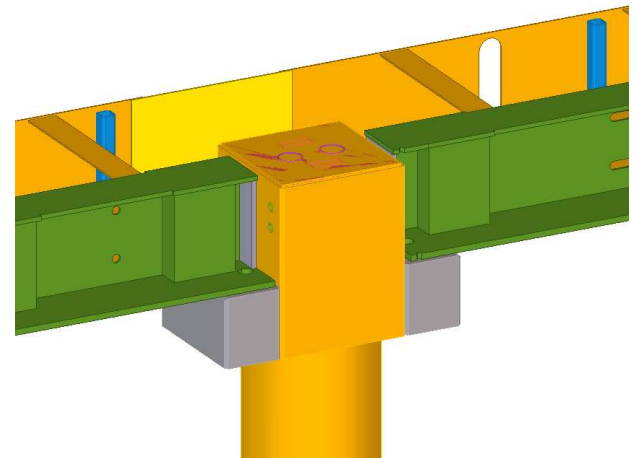
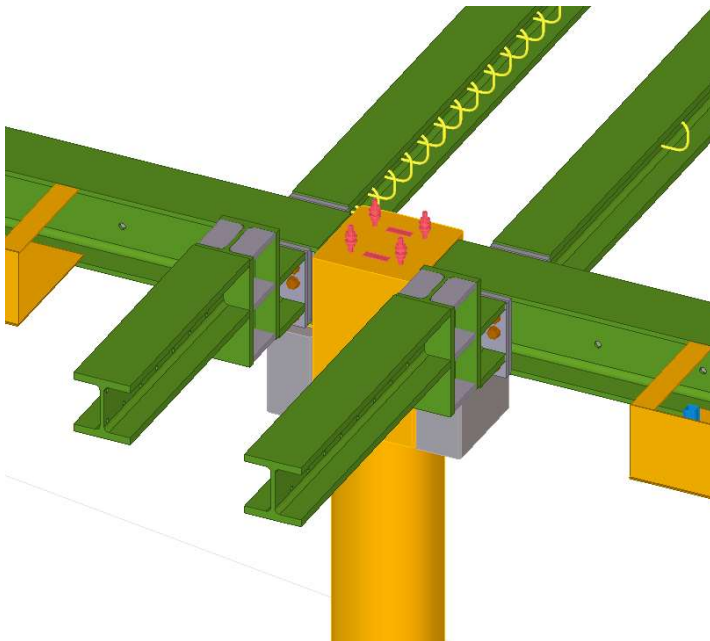
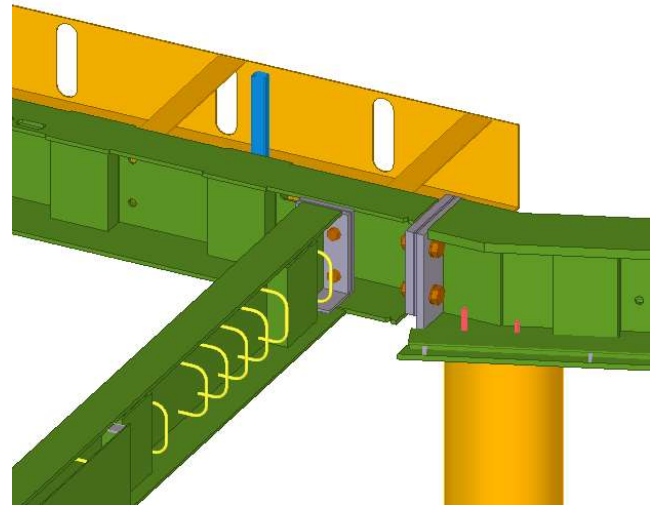
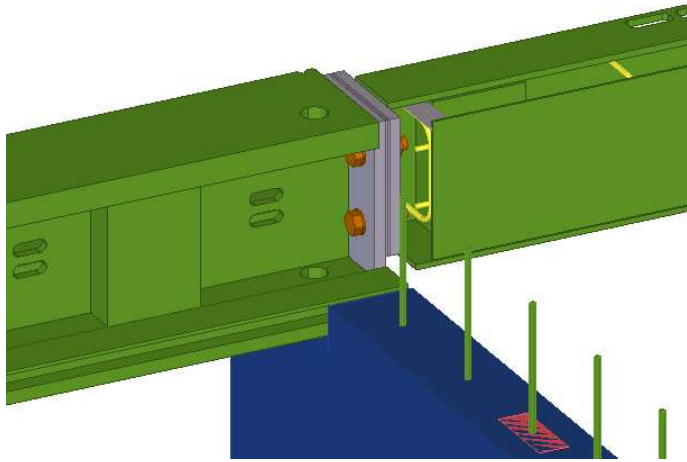
## Detaljer og samlinger



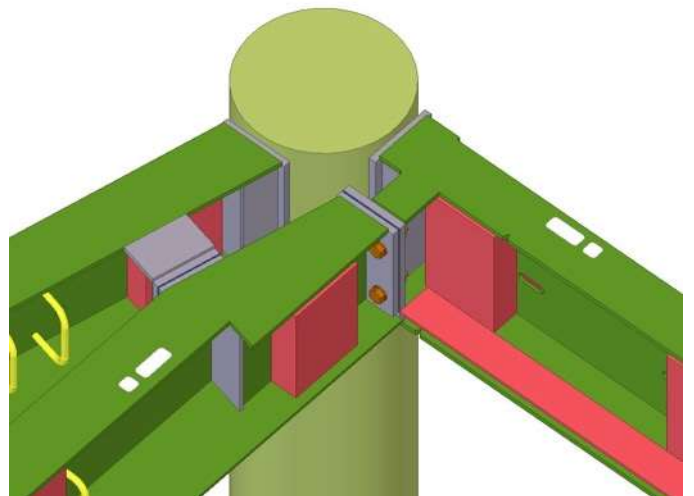
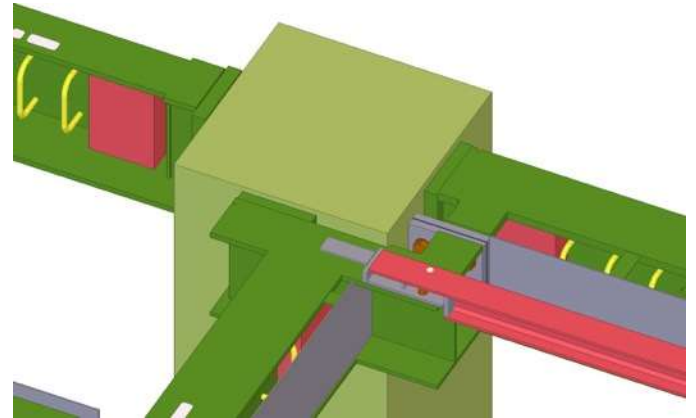
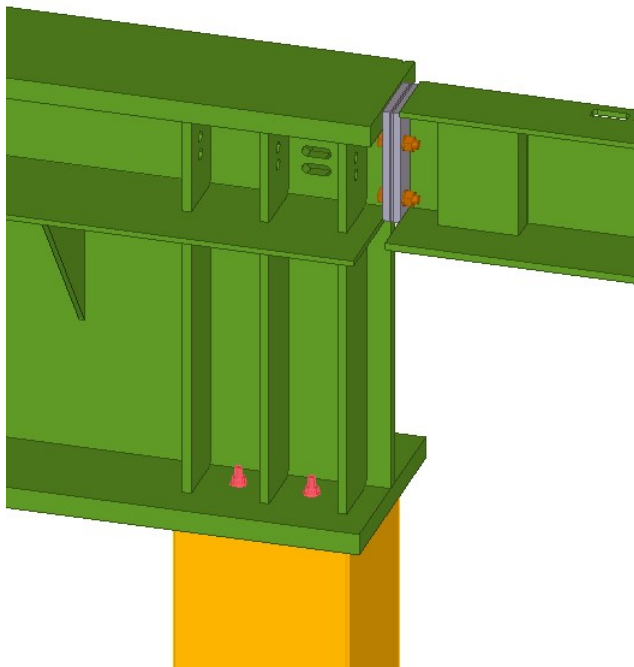
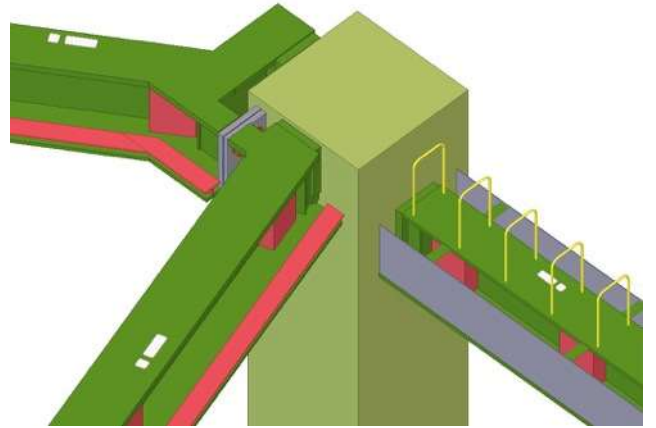
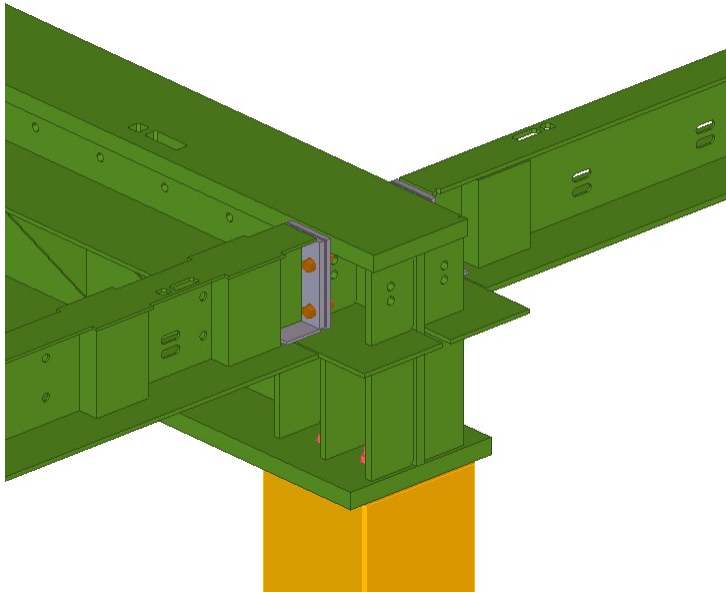
## Detaljer og samlinger



## Detaljer og samlinger



## Detaljer og samlinger

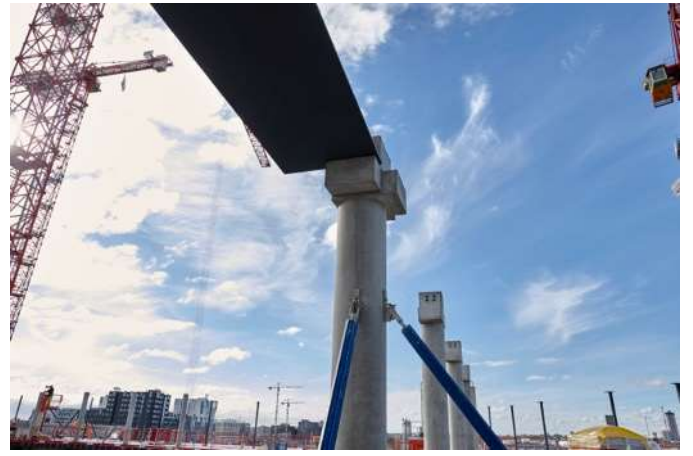


## Montage



# GIVE STEEL A/S

Show case – Posten, Copenhagen Central



# GIVE STEEL A/S

Show case – Posten, Copenhagen Central

