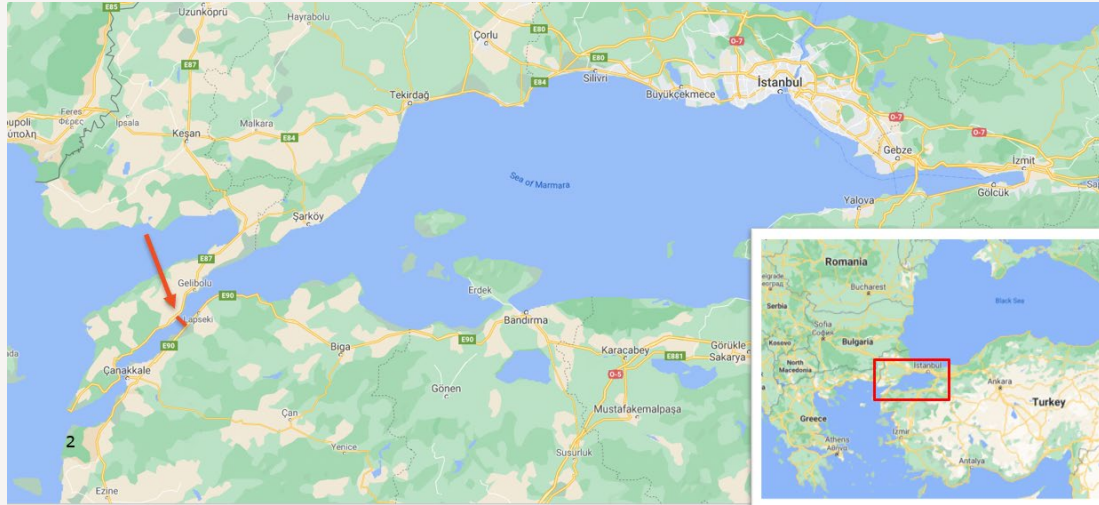


Stationed abroad at 1915 Çanakkale Bridge

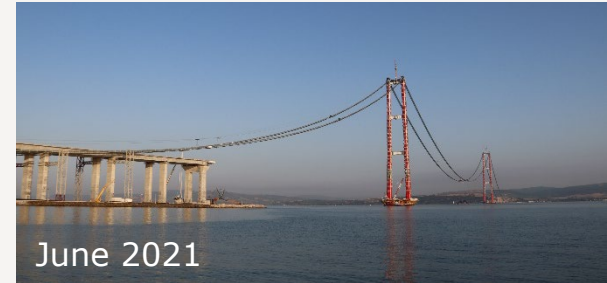
Dansk Ståldag 10. November 2022

Karina Johanne Thage
Lorenzo Scaramuzza

1915 Çanakkale Bridge

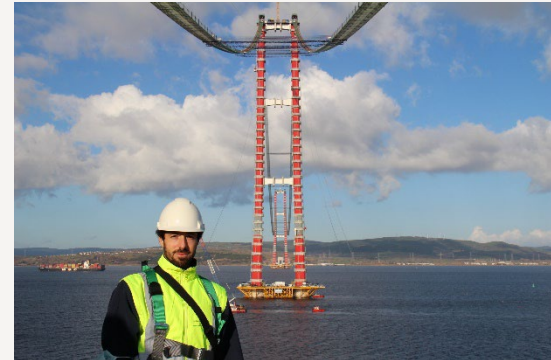


- Suspension bridge with world record main span 2023m
- Steel superstructure
- Tower height 318m
- Twin box girder

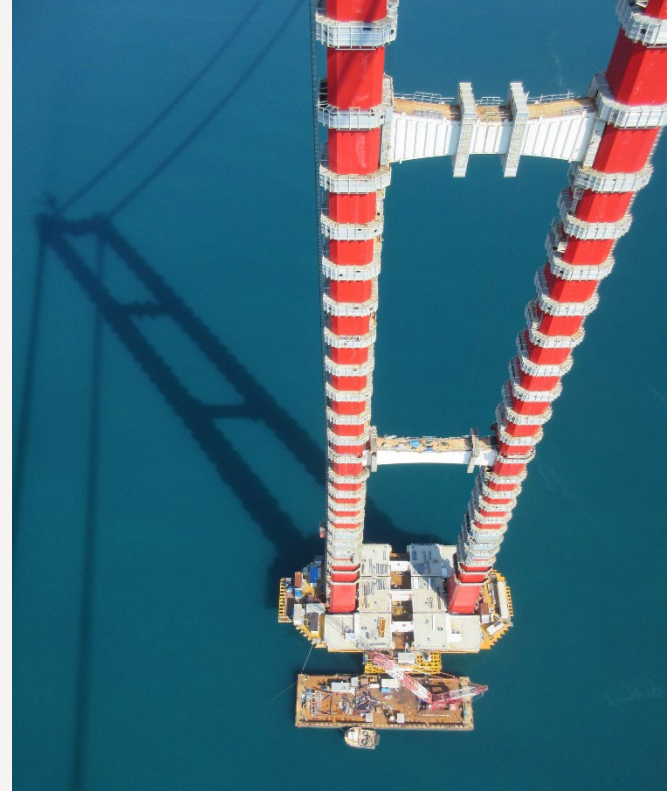
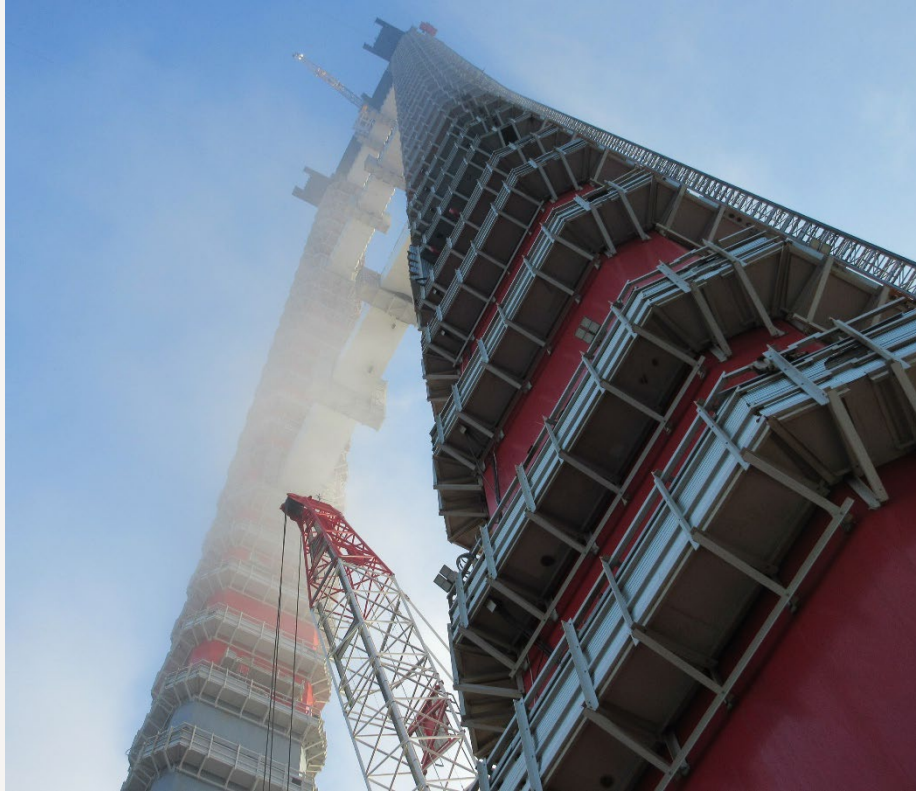


Our role on the construction site

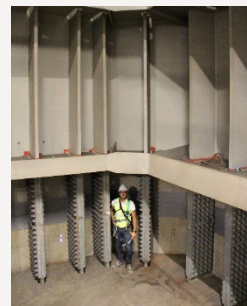
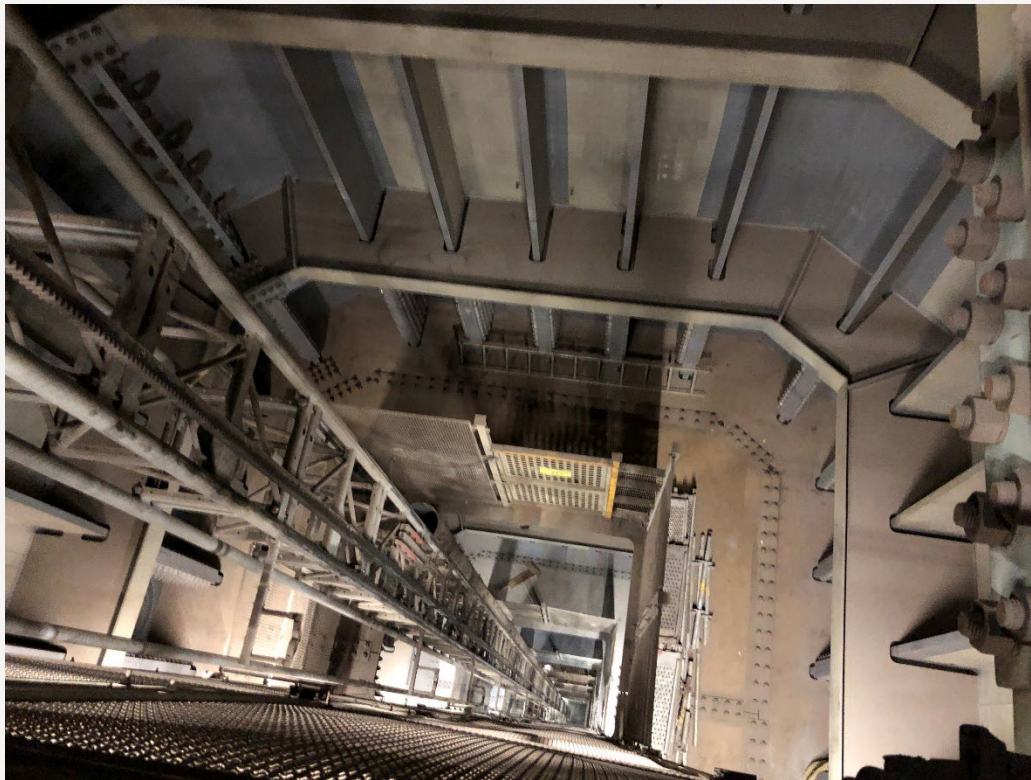
- Seconded to the contractor DLSY, in the construction engineering dept.
- Assisting with review of cable and deck erection
- Design of temporary structures



The steel tower



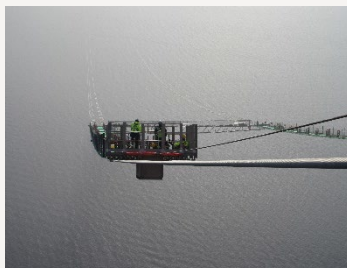
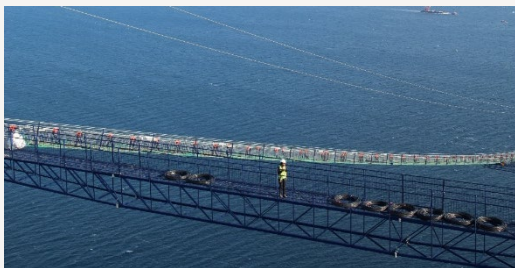
The steel tower



Catwalk erection



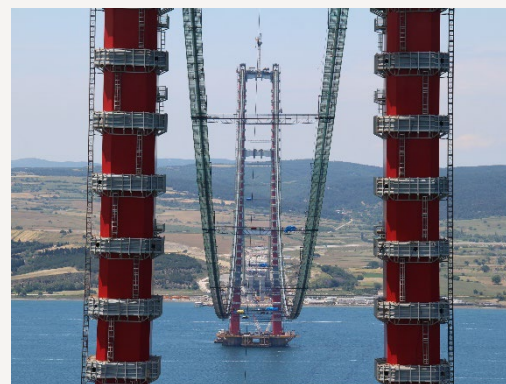
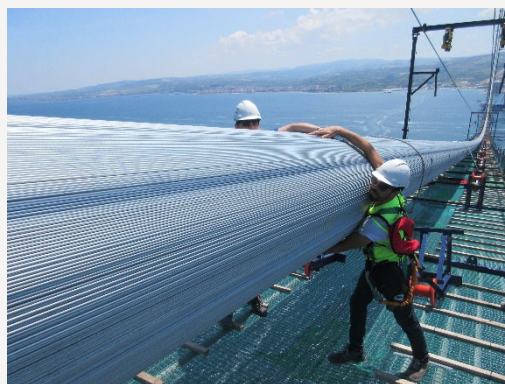
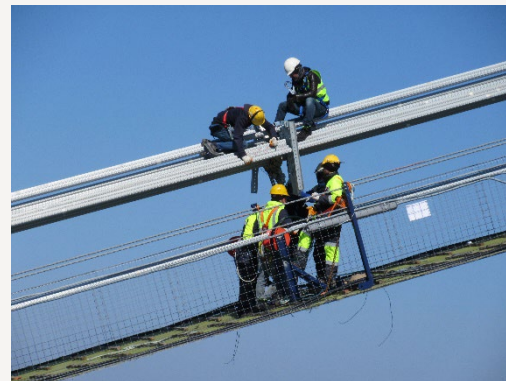
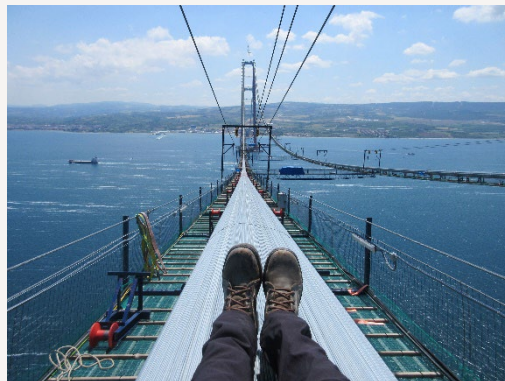
Catwalk erection



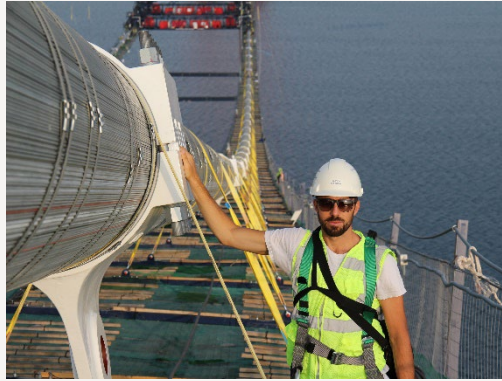
Cable erection



Cable erection



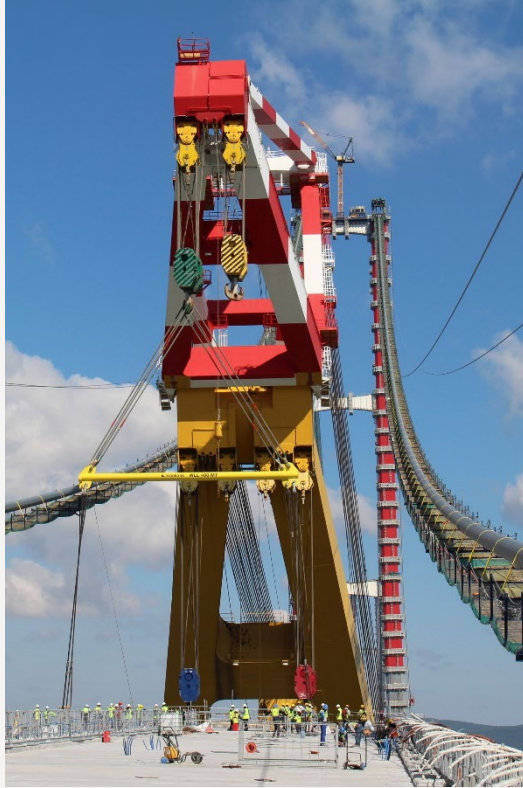
Cable erection



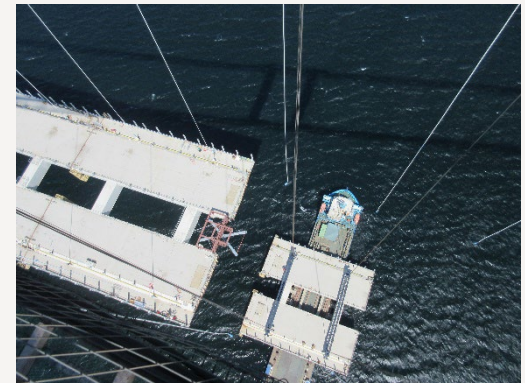
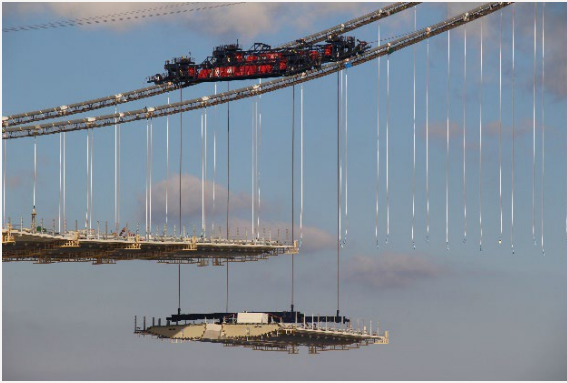
Storage of deck segments at site



Erection by floating crane



Erection by lifting gantries



Deck erection



Deck erection



Fit up and welding of deck segments



Final days



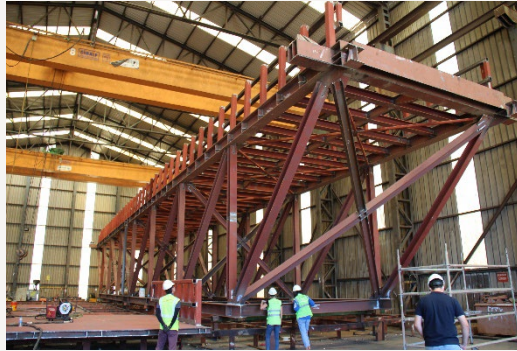
Personal experience

Direct involvement in:

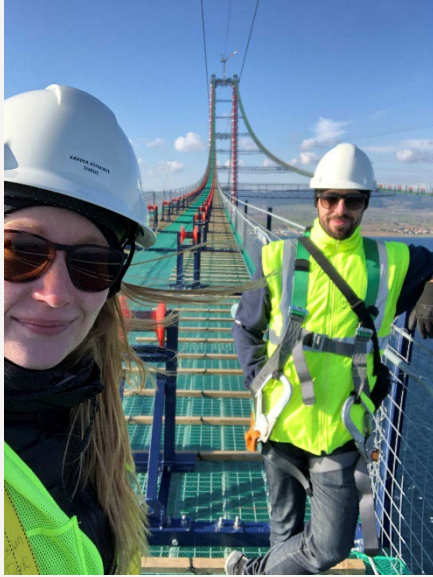
- Design
- Fabrication
- Installation
- Service
- Dismantling

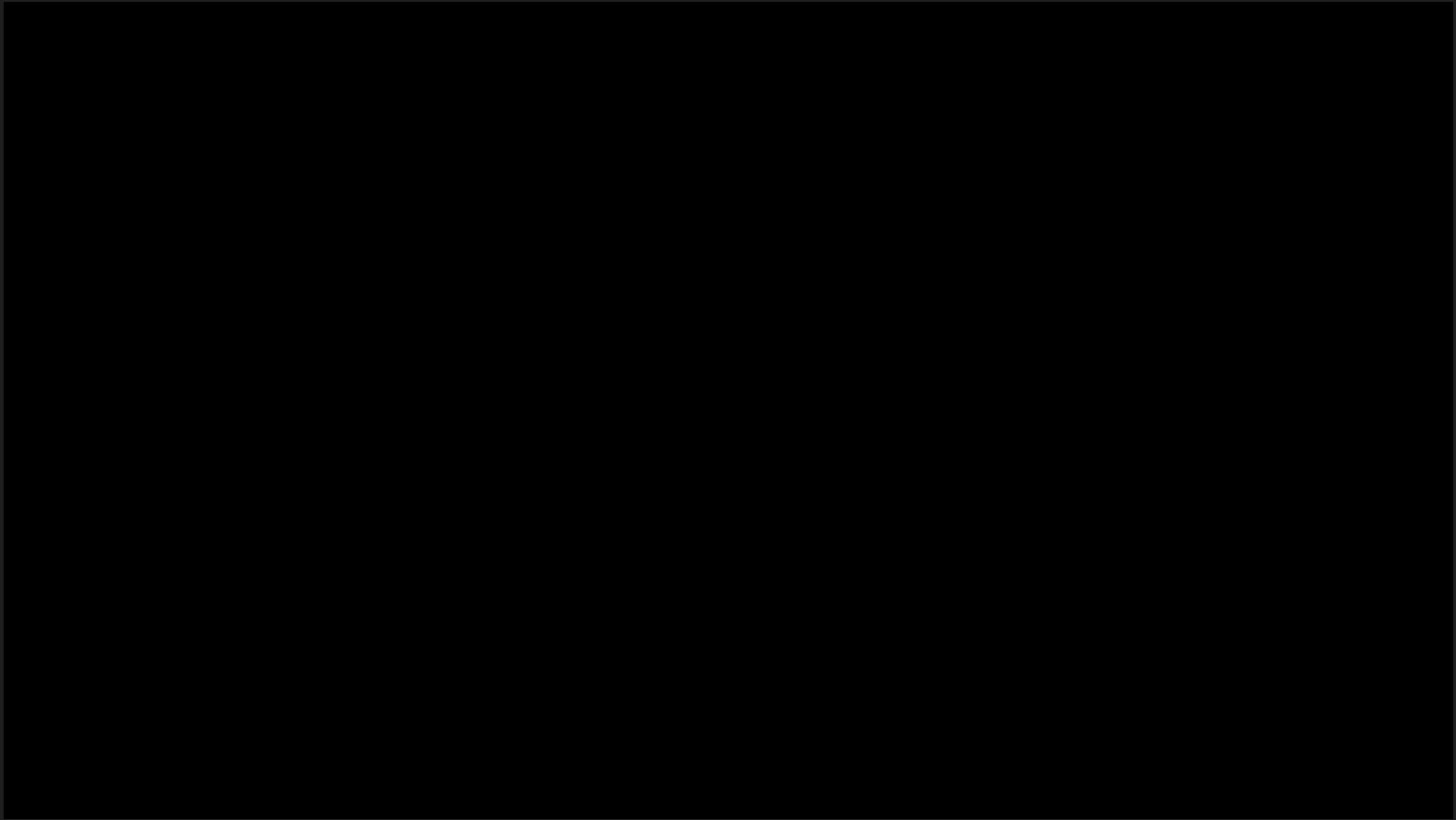
Pandemic at work:

- Steel quality limitation
- Re-use as much as possible



Life affected by pandemic





TAK

A large-scale photograph of a suspension bridge under construction. The bridge features two prominent red towers with white horizontal bands. Numerous white suspension cables fan out from the towers to support the bridge deck. The bridge spans a wide body of water under a clear blue sky with some light clouds. In the background, a range of low hills is visible. A yellow and white barge, identified as the COWI barge, is positioned at the base of the bridge, supporting the lower part of the structure.

21

10 NOVEMBER 2022
STATIONED ABROAD AT 1915 ÇANAKKALE BRIDGE

COWI